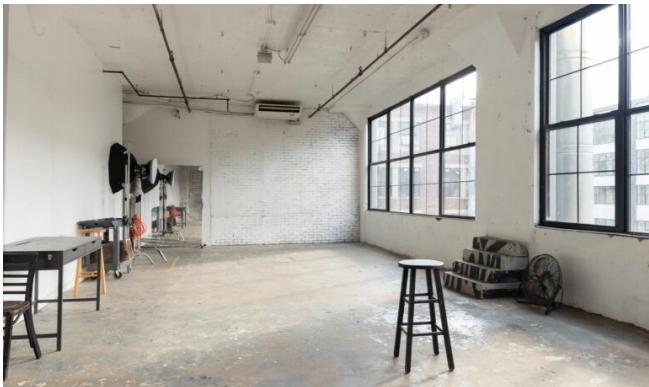
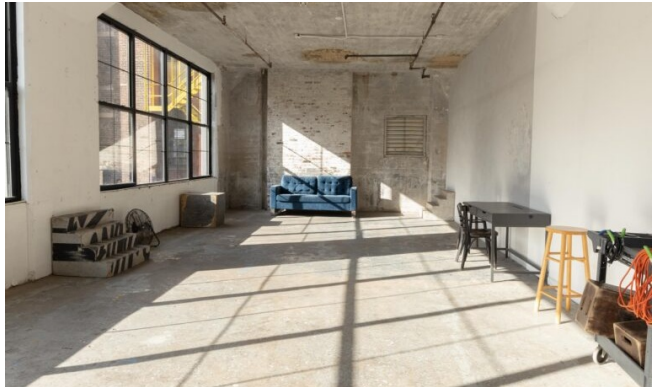
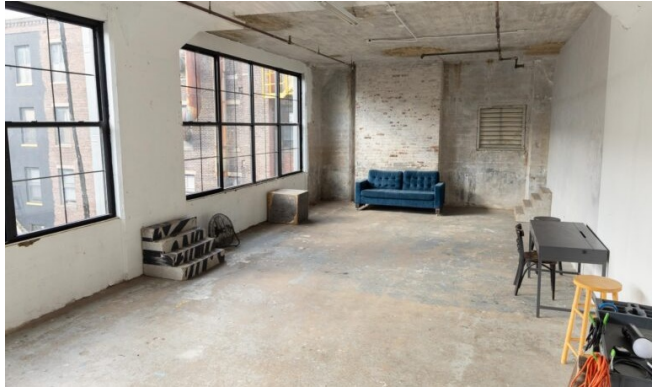


**Important!** It's a self-check-in studio. There will be no employee at the front desk during your booking. If you require a freight elevator, please notify us at least 24 hours in advance. Last-minute requests may not guarantee the availability of the freight elevator for your booking.

Looking for a photo studio for rent near me? This 844 sq. ft. industrial LIC 3 studio in New York features exposed brick and concrete walls, 11-foot ceilings, and expansive northwest-facing windows that flood the space with natural light. The open layout includes a stylish blue sofa, essential furniture, and professional photography equipment, offering a versatile setting for any creative project. Rentals are 100% private with no deposit, insurance, or permits required. Book by the hour or choose flexible multi-hour packages. Reserve now and bring your vision to life in this inspiring space!

# LIC 3



# LIC 3

## Rental Rates

### Monday - Friday

12 Hour Pack	\$39.99 / hour	27% Discount Total: \$479.88	8 Hour Pack	\$44.99 / hour	18% Discount Total: \$359.92
4 Hour Pack	\$49.99 / hour	9% Discount Total: \$199.96	Rent By Hour 1 hour minimum	\$54.99 / hour	

### Saturday - Sunday

12 Hour Pack	\$44.99 / hour	25% Discount Total: \$539.88	8 Hour Pack	\$49.99 / hour	16% Discount Total: \$399.92
4 Hour Pack	\$54.99 / hour	8% Discount Total: \$219.96	Rent By Hour 1 hour minimum	\$59.99 / hour	

## Included with each rent

- ✓ 100% Private Stage
- ✓ 3x Flash Units (Strobes)
- ✓ 2x Make-up Station
- ✓ Black Leather Sofa
- ✓ No Deposit Required
- ✓ Wireless Triggers
- ✓ Sound System (AUX)
- ✓ Fans, Sand Bags etc.
- ✓ No Insurance / Permits
- ✓ Paper Backdrops
- ✓ Free Wi-Fi

Floor plan of a room with the following dimensions and features:

- Overall width: 40' 1"
- Overall depth: 17' 9"
- Room area: 844 ft<sup>2</sup>
- CEILING HEIGHT 11'
- Room layout includes a large open area and a smaller section on the left with a door and a window.
- Dimensions for the left section:
  - Top left corner: 4' 6" (width), 16' 5" (height)
  - Bottom left corner: 4' 3" (width), 15' 5" (height)
  - Bottom left corner: 4' 3" (width), 15' 11" (height)
  - Bottom left corner: 4' 6" (width), 16' 5" (height)
  - Bottom left corner: 4' 7" (width), 16' 5" (height)
- Dimensions for the right section:
  - Top right corner: 36' 1" (width), 17' 9" (height)
  - Bottom right corner: 35' 7" (width), 15' 8" (height)